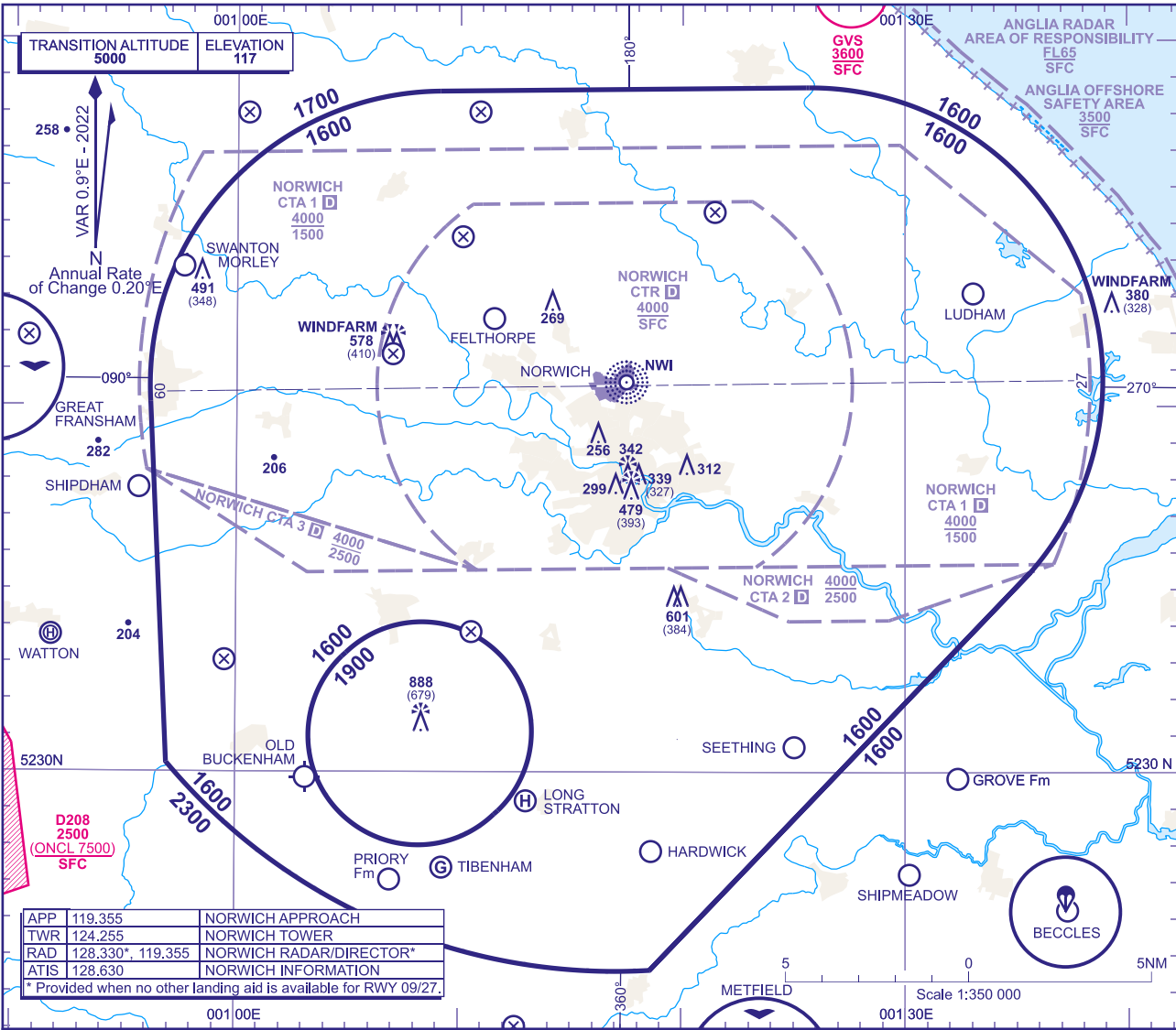


ATC SURVEILLANCE MINIMUM  
ALTITUDE CHART - ICAO

BEARINGS, TRACKS AND RADIALS ARE MAGNETIC  
ELEVATIONS IN FEET AMSL 888  
HEIGHTS IN FEET AGL (679)

NORWICH



MINIMUM INITIAL ALTITUDE

Within the ATC Surveillance Minimum Altitude area the minimum initial altitude to be allocated by the approach surveillance controller is **1600** in the sector defined by the lateral limits; 524835N 0010905E - 524842N 0012534E thence clockwise by an arc of a circle radius 8NM centred on 524043N 0012542E - 523528N 0013537E - 522436N 0011835E - thence by an arc of a circle radius 16NM centred on 524033N 0011658E - 523015N 0005655E - 524005N 0005609E thence clockwise by an arc of a circle radius 8NM centred on 524035N 0010916E - 524835N 0010905E except, **1900** in the sector defined by the lateral limits; 523309N 0010446E - 523315N 0010457E thence clockwise by an arc of a circle radius 3NM centred on 523106N 0010822E to 522857N 0011147E - 522851N 0011136E thence clockwise by an arc of a circle radius 3NM centred on 523100N 0010811E - 523309N 0010446E.

OUTSIDE THE DESIGNATED ATC SURVEILLANCE MINIMUM ALTITUDE AREA

The minimum altitude to be allocated by the approach surveillance controller will be either the Minimum Sector Altitude, or **1000** above any fixed obstacles:  
a) within 5NM of the aircraft\*, and  
b) within the sector 15NM ahead of and within 20° either side of the aircraft's track\*.

\*When the aircraft is within 15NM of the radar antennae, the 5NM in a) and the 15NM in b) may be reduced to 3NM and 10NM respectively.

LOSS OF COMMUNICATION PROCEDURES

Initial Approach

Continue visually or by means of an appropriate approved final approach aid. If not possible proceed at **2000**, or last assigned level if higher, to **NDB(L) NWI†**.

Intermediate and Final Approach

Continue visually or by means of an appropriate final approach aid. If not possible follow the Missed Approach Procedure to **NDB(L) NWI†**.

† In all cases where the aircraft returns to the holding facility the procedure to be adopted is the Radio Failure Procedure detailed at ENR 1.1.3.4.

GENERAL INFORMATION

1. Levels shown are based on QNH.
2. Only significant obstacles and dominant spot heights are shown.
3. The minimum levels shown within the ATC Surveillance Minimum Altitude Area are in conformance with the Standard European Rules of the Air - SERA.5015.
4. Minimum Sector Altitudes are based on obstacles and spot heights within 25NM of the Aerodrome Reference Point.
5. Controlled airspace with a base in excess of **5000** or FL55, as appropriate, is not shown.
6. The ATC Surveillance service is provided by Primary and/or Secondary Radar equipment.
7. **This chart may only be used for cross-checking of altitudes assigned when in receipt of an ATC Surveillance service.**
8. Detailed description of FIR, UIR, CTA and TMA see ENR 2.1.
9. Detailed description of ATS airspace organized at the aerodrome see AD 2.17.

CHANGE (2/25): SNETTERTON HEATH DISUSED AD REMOVED.